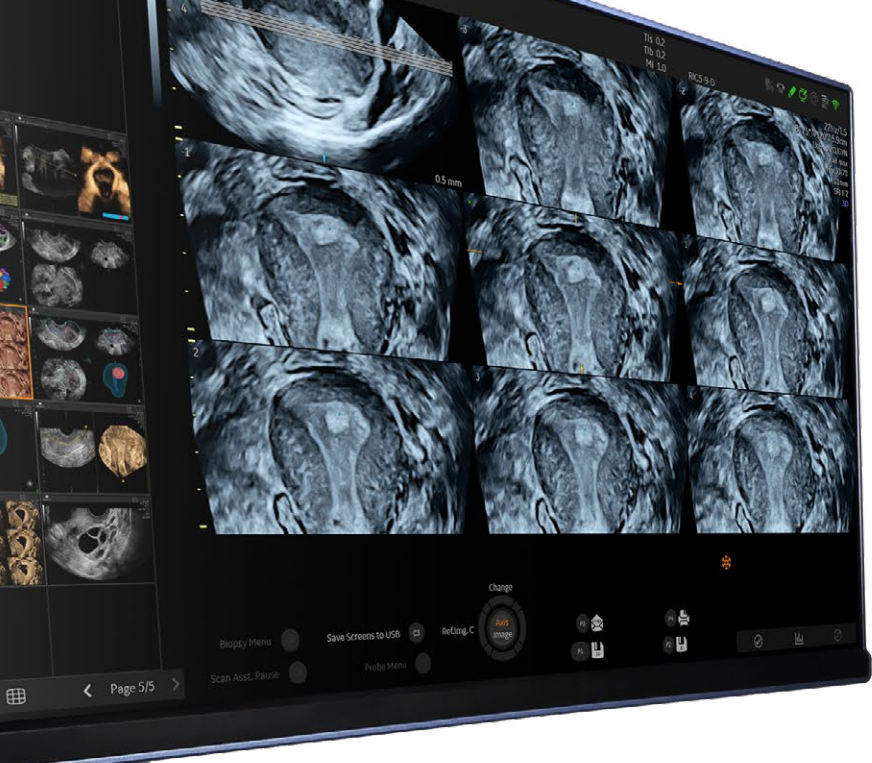




GE HealthCare



Voluson Signature 18



Fast. Forward.

It's time to redefine the speed of women's health ultrasound



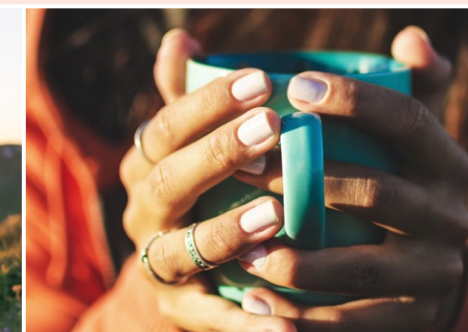
Voluson™

A Healthier Future for Women

Accelerate your every day

Good healthcare can't be rushed, but the right ultrasound system can save you precious time and effort. Move fast, move forward with the Voluson Signature 18. Simplify your everyday with fewer steps, fewer keystrokes, and fewer obstacles. Uncover quick, confident answers with effortless imaging and built-in AI tools—all at an accessible price point.

The new Voluson Signature 18 continues our legacy of innovation and dedication to creating a healthier future for women. With technologies migrated from our premium Voluson Expert platform, we leverage advanced clinical applications for exceptional image quality, breakthrough workflow solutions, and transformative design for an elevated ultrasound experience.

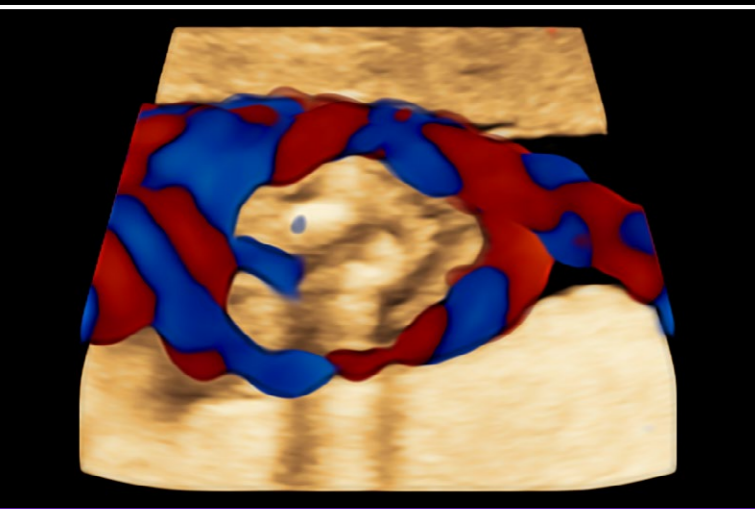


Get through your day up to
25% faster¹



Imaging that can help get the right answer. Right away.

Make a big jump in image quality and an even bigger leap in performance with powerful innovations migrated from our industry-leading Expert series of ultrasound systems.

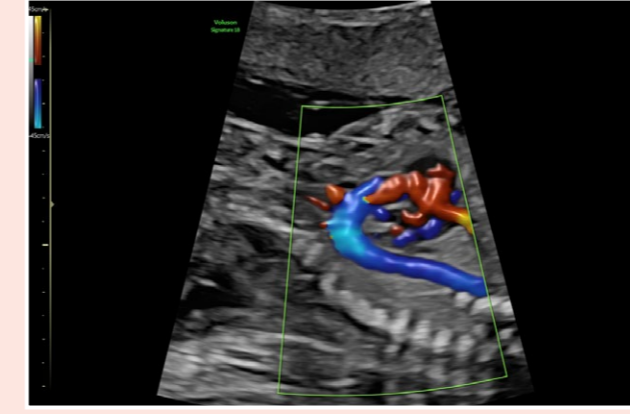
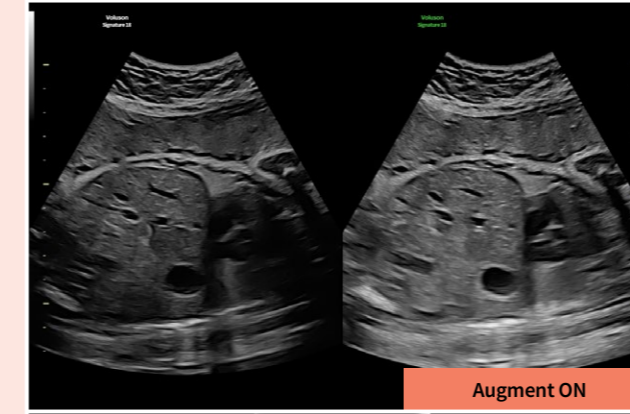
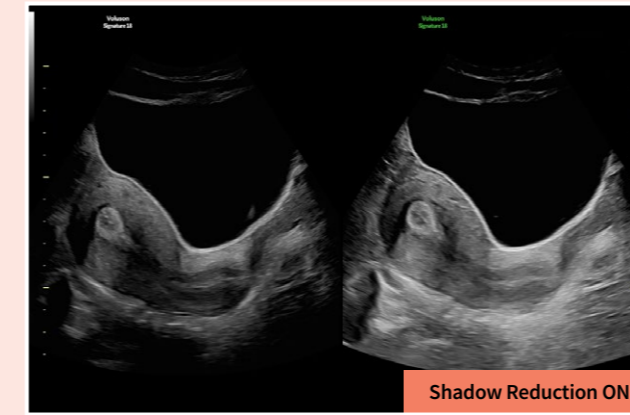


Voluson Unity Architecture

The Voluson Signature 18 incorporates a new imaging architecture to deliver faster processing speeds and higher frame rates than our legacy Signature systems. Voluson Unity Architecture combines high-performance hardware with flexible, scalable software that work in harmony with expert-level probes. The result is enhanced detail and contrast resolution, greater color quality and sensitivity, and exceptional 3D/4D performance.

Get to a great image faster and experience even more confidence with advanced imaging applications designed to make scanning effortless across a variety of patient types.

Get great images faster



Shadow Reduction

Decreases shadows on B-mode imaging which can obscure adjacent structures by helping to restore tissue information and borders.

Augment

With one button touch, reduce noise and increase penetration in even the most challenging high BMI patients, for a clean, robust, homogeneous image.

Radiantflow™

Next level color Doppler that delivers exceptional sensitivity for easy, fast visualization of blood flow, displaying a 3D-like appearance as seen in this 21-week fetal heart.

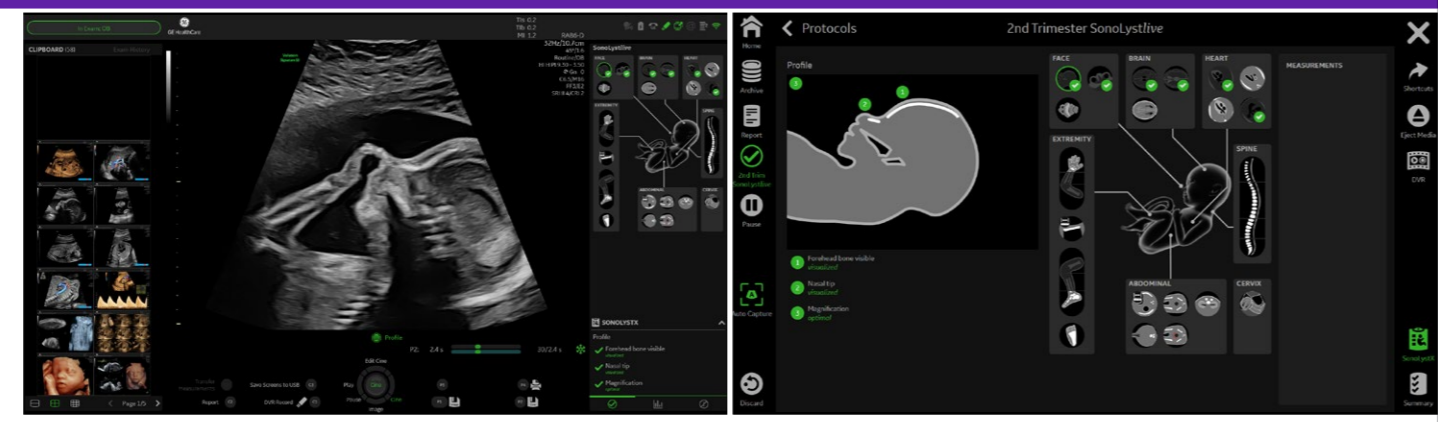




Click less. Achieve more.

Imagine your workday, but easier. The Voluson Signature 18 is your workflow enhancer with leading AI-based technology and progressive tools that simplify and speed up exams. Automate manual tasks and calculations to save time, increase consistency, and improve accuracy.

Artificial Intelligence

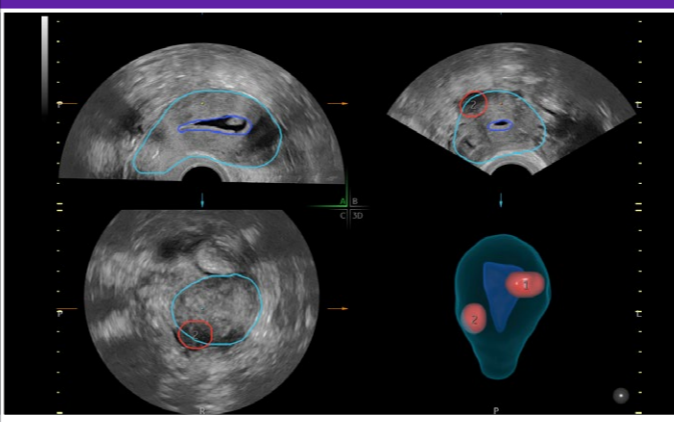


SonoLyst*

A suite of tools that leverage AI to identify fetal anatomy seen on standard views, then automatically annotates and measures where applicable.

- **SonoLystX** – Your virtual onboard expert uses AI to ensure high-quality scans.
- **SonoLystIR (Image Recognition)** – Simply scan, then freeze and the system does the rest.
- **SonoLystlive** – Takes image recognition to the next level by capturing images as you scan in real-time without stopping to freeze, annotate, or store.

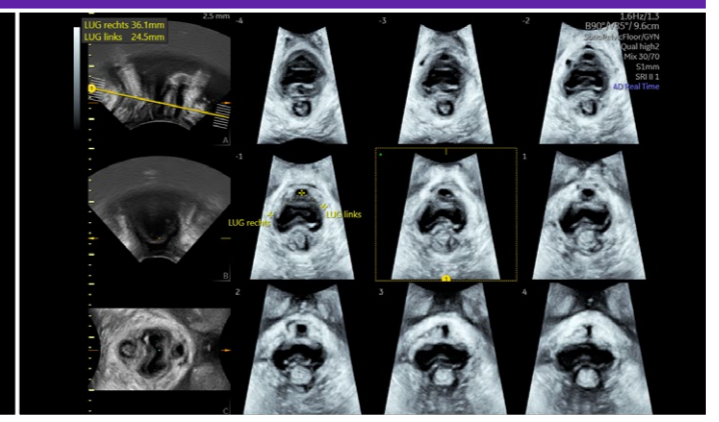
Reduce the time to complete the standard ISUOG 2nd trimester exam requirements by **40%**¹



SonoGYN

Combines our Uterine Trace tool and Fibroid Mapping feature, an AI reporting tool that maps fibroids in 3D.

- **Uterine Trace** takes the effort out of 3D by obtaining the coronal view of the uterus in three simple steps.
- **Fibroid Mapping** uses AI to standardize and streamline fibroid documentation by mapping, measuring, and classifying fibroids. Mapping a fibroid's exact position in relationship to the uterus in 3D can help simplify follow-up and communication of results.



SonoPelvicFloor

Transform your pelvic floor evaluations. Simplify and speed up exams with automated plane alignment and automated measurements for more consistent reproducible results.

Reduces pelvic floor exam time by up to **75%**¹



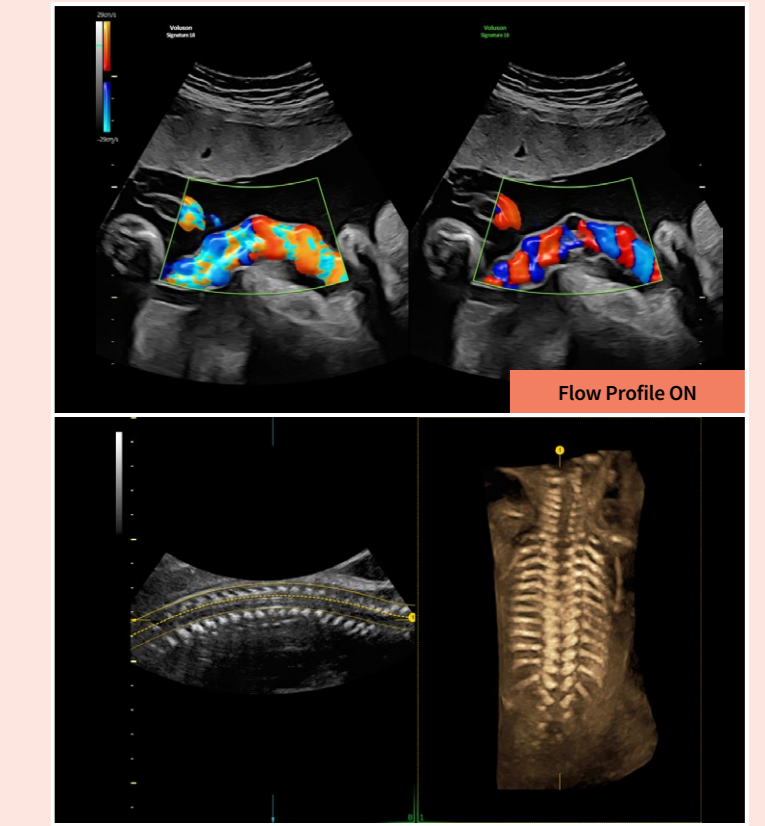
Reduce keystrokes by **64%** over manual Doppler optimization¹



Automation

Flow Profiles

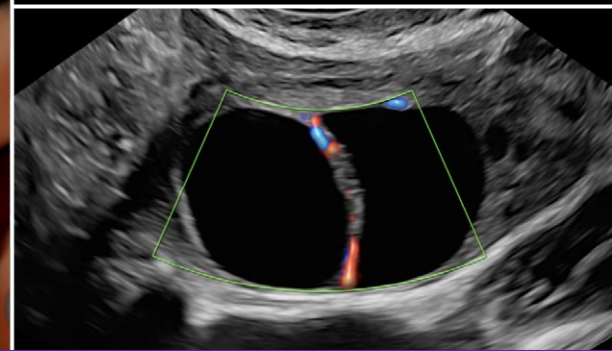
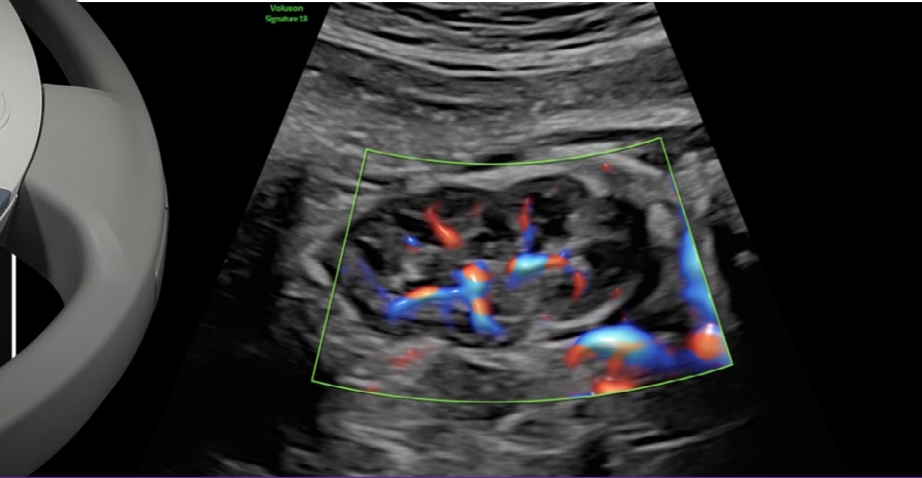
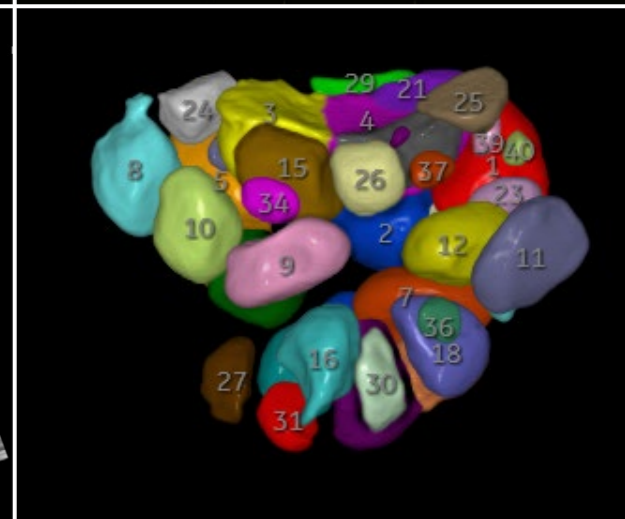
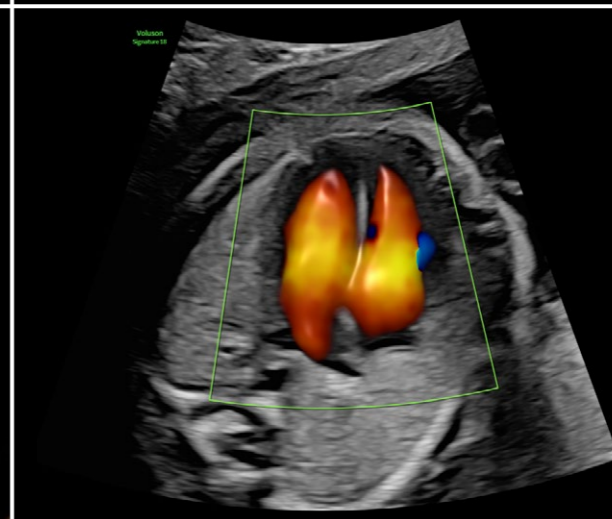
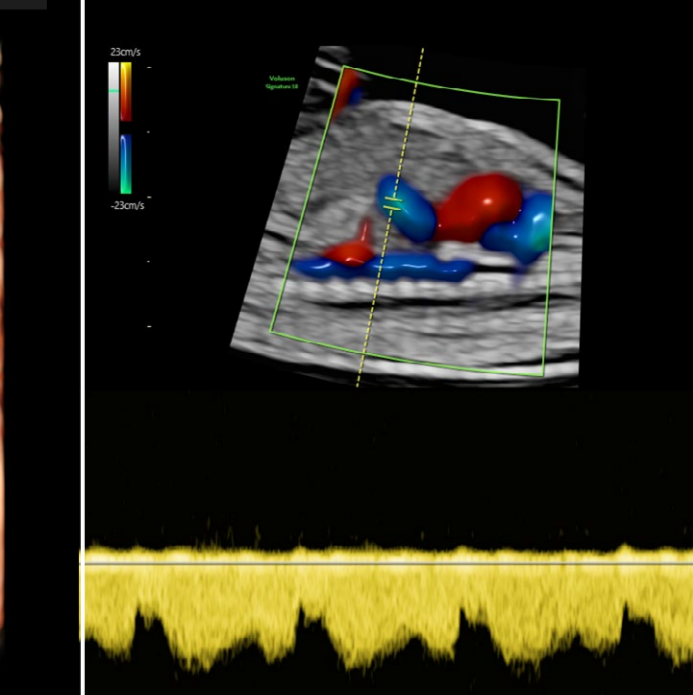
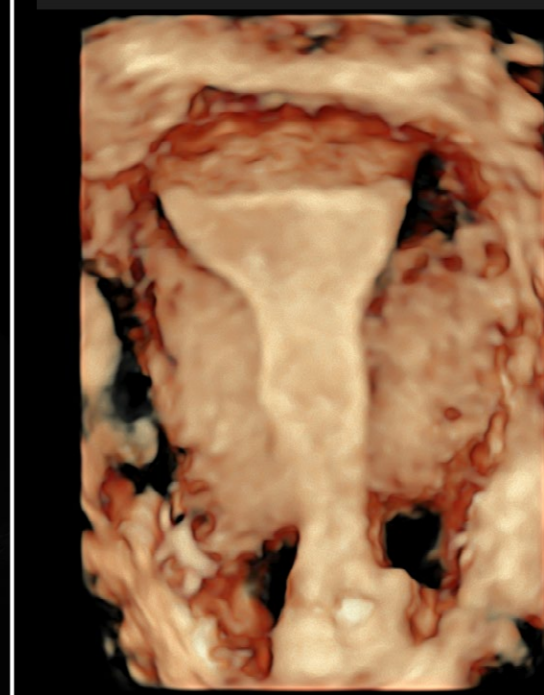
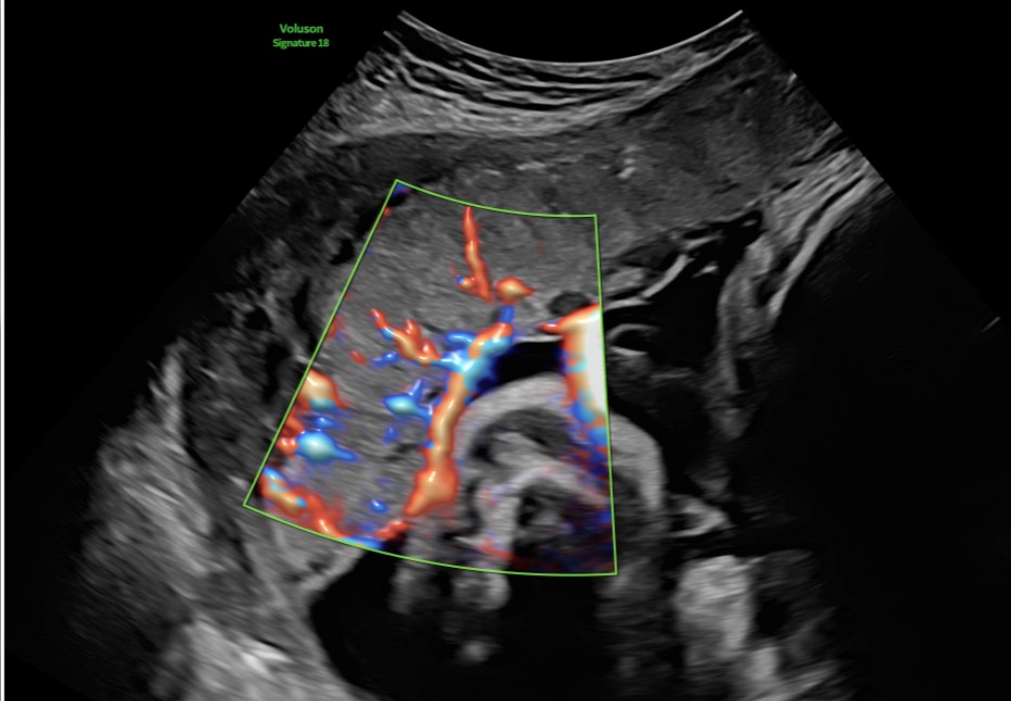
Dramatically simplifies color and pulsed-wave Doppler optimization by utilizing predefined and optimized settings.



Spine Trace

Welcome to easy and seamless 3D. Simply trace the spine and the system automatically acquires the volume and displays the coronal view.





Built for ease. Built for you.

The Voluson Signature 18 is simple by design.



1. It's nice to share

Experience more flexibility with advanced probe technology that's also compatible with our Voluson Expert series. There are 4 conveniently located probe ports with ambient illumination.



2. Feel the difference

Modern yet familiar, user interface is based on our industry-leading Voluson Expert series and features a haptic feedback touch panel, which plays a powerful role in improving the user experience.



3. Cut the cord

Wireless probes are now a reality with the Vscan Air™ wireless dual curved and linear probe. Vscan Air CL seamlessly integrates into your Voluson Signature system and can be easily charged while not in use.



4. Make it yours

Personalize your system and truly make it yours with over 23 million customization combinations including custom colors.



5. Use your voice

The new “Hey Voluson” feature allows you to operate your system using voice command, saving time and keystrokes.



6. Get comfortable

The thoughtful ergonomic design features a height adjustable, swivel control panel.

Go further. Faster.

Get more out of your ultrasound system—more services, more support, and more future-focused solutions that can take you further. Connecting your system enables even faster ways to leverage our entire ecosystem of digital solutions, lifecycle, educational support and the Voluson community.



Education and training

Leverage our clinical and technical education solutions as well as training support to help you provide the highest quality of care and achieve operational excellence.



Probe repair and hygiene solutions

A continuum of support for your probes, including disinfection and hygiene solutions. Stay a step ahead with Probe Check, which assesses the health of your probes and can alert you to potential issues.



Verisound™ Collaboration

Secure, virtual, real-time collaboration tools. Utilize to seek advice, connect with colleagues, solicit second opinions, or engage patient family members.



Verisound Fleet*

Cloud-based solution that lets you manage devices remotely from one central location. Monitor devices across your fleet and view, back up, and deploy device configurations remotely.



Updates, upgrades, and device protection

Keep your devices secure and running smoothly. Download critical Windows® patches, security updates, and Voluson extension releases at your convenience with eDelivery.* Protect your ultrasound system from cyberattacks with Voluson's comprehensive SonoDefense solution.



Maintenance, repair, and remote support services

Manage your total cost of ownership while improving system uptime with maintenance contracts and features like OnWatch™ proactive monitoring with InSite™ connectivity.



Voluson Club

Like family, we are here for you. The only ultrasound community dedicated to the education and collaboration of women's health practitioners to help expand your expertise and your practice. <https://www.volusonclub.net>



Verisound Reporting

ViewPoint™ 6 is a dedicated ultrasound reporting and image management solution with enhanced features to help improve workflow.



Performance optimization solutions

Maximize the performance, workflow, and utilization of your Voluson ultrasound system using Imaging Insights, iCenter Performance Management tools, and other digital solutions.



Voluson Image Portal

Easily share selected images with patients directly from your Voluson ultrasound system.

*Not available in all countries.





GE HealthCare

1. DOC 2967080 SC400 Marketing Claims.

*SonoLyst incorporates the AI technology of Intelligent Ultrasound.

Products mentioned in the material may be subject to government regulations and may not be available in all countries. Shipment and effective sale can only occur after approval from the regulator. Please check with local GE HealthCare representative for details.

© 2024 GE HealthCare.

Voluson, Radiantflow, OnWatch, Verisound, Vscan Air, XDclear, InSite, and ViewPoint are trademarks of GE HealthCare. Windows is a registered trademark of Microsoft Corporation. GE is a trademark of General Electric Company used under trademark license.

February 2024

JB27579XX

